

# Cragside

AccessABILITY LTD

putting you in touch with technology



## Braille Maker *for* Windows

Cragside AccessABILITY Limited  
The Cragside Suite  
International House  
Cray Avenue, Orpington  
Kent, BR5 3RY

Telephone	0870 321 7091
Fax	0870 321 7098
Minicom	0870 321 7097
Dotline	0870 321 7099

Email [dotline@braillemaker.com](mailto:dotline@braillemaker.com)

Web [www.braillemaker.com](http://www.braillemaker.com)

Online Shop [www.accessableworld.com](http://www.accessableworld.com)

# Braille Maker

Braille Maker is a long established Braille translation package, first released in 1988. Clients include government, the BBC, RNIB, NLB, trade unions, banks and universities.

Originally a DOS product, Braille Maker has been progressively developed to create a range of user friendly Windows based products.

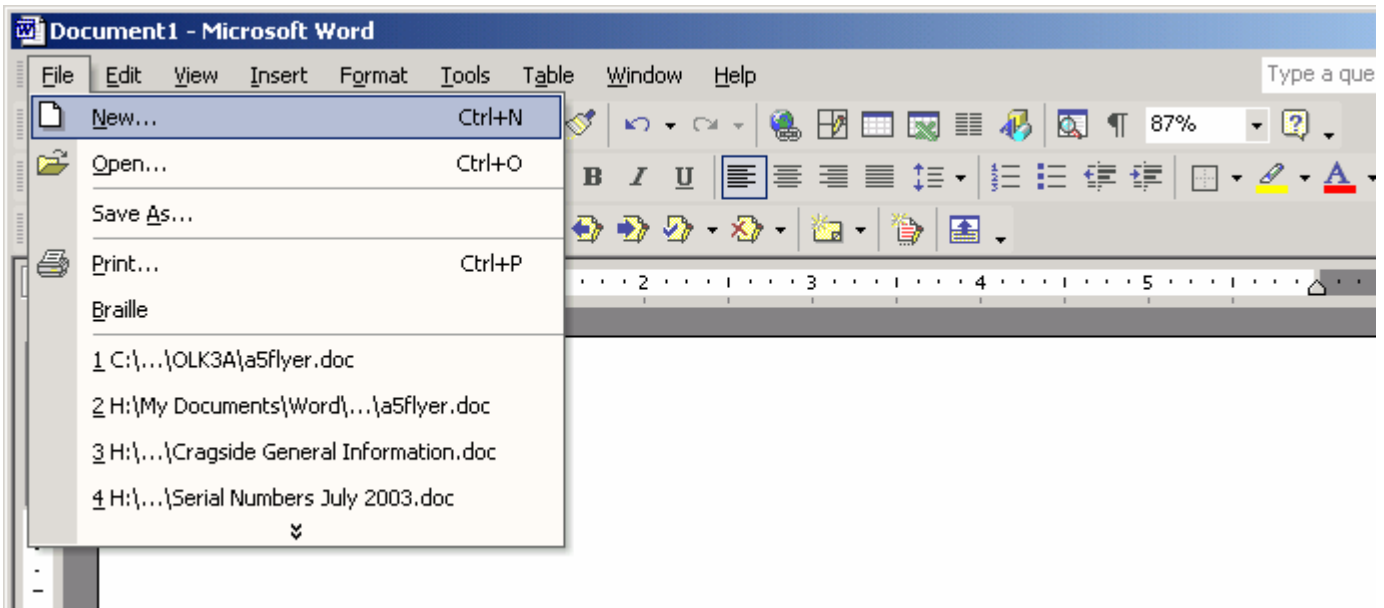
All Braille Maker products can be fully integrated with your word processor and are supported by trained professionals



# Braille Maker Standard

**Braille Maker for Windows provides the user with a quick and easy way to translate word processed documents into high quality grades one or two English Braille.**

**No Braille knowledge is required and only limited computer experience is necessary to use this software to produce a high standard of Braille.**



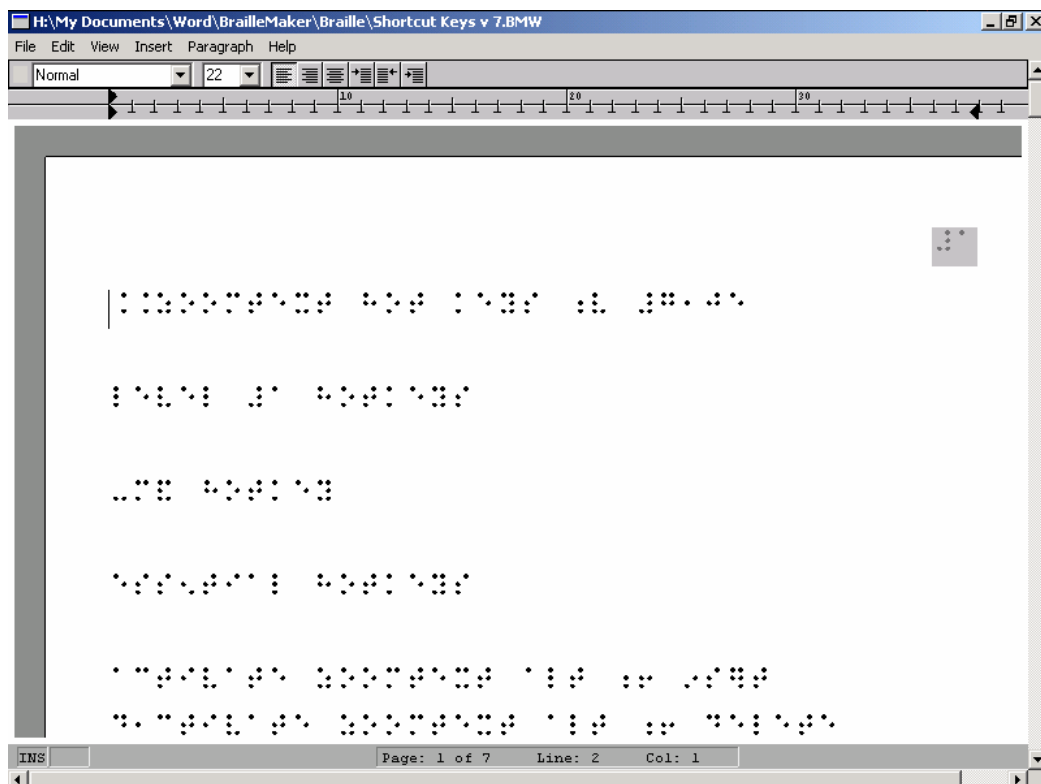
## Features

- ◆ **Works with many file formats**
- ◆ **Little or no file preparation required**
- ◆ **Braille page preview**
- ◆ **Prints to any embosser**
- ◆ **Translate and emboss without leaving your word processor**
- ◆ **Braille option available on file drop-down menu in Word**
- ◆ **Supports Word processor headers, footers, numbers, leader dots etc.**
- ◆ **Support for print page numbering from MS Word including automatic print page indicator.**

# Braille Maker Professional

**Braille Maker Professional** retains all the advantages of **Braille Maker**; its simplicity of use, user friendliness and compatibility with **MS Word** together with the following additional features.

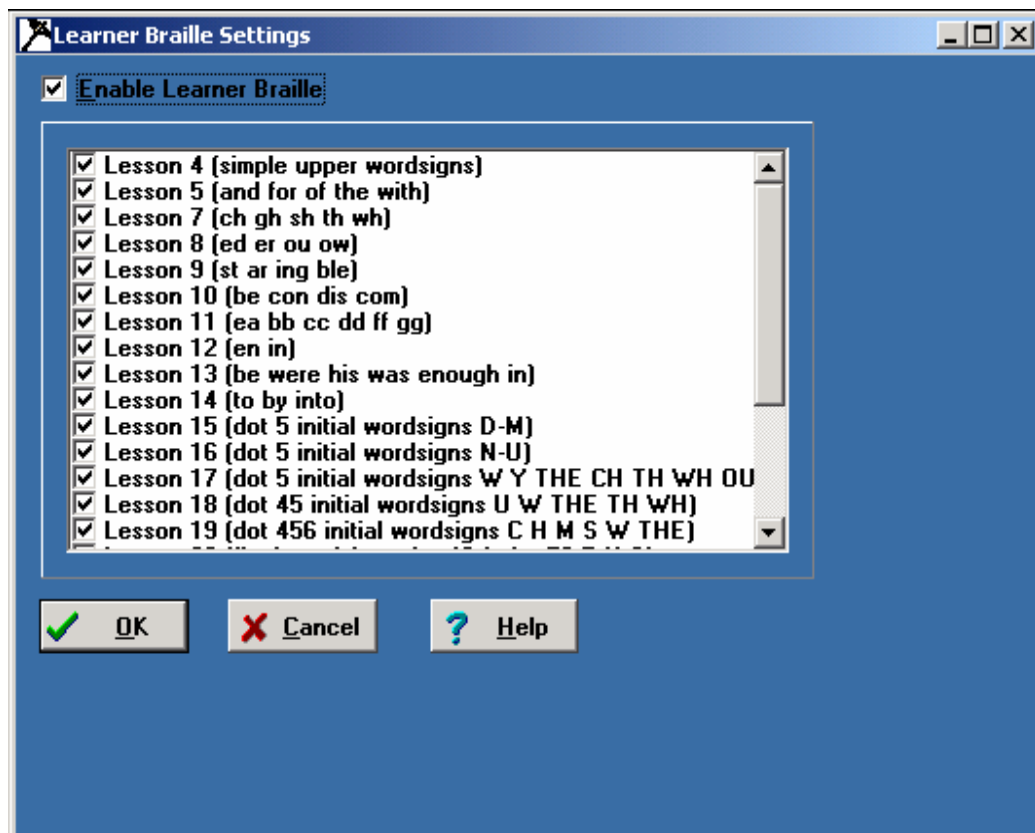
**Braille Editor:** this enables the user to make layout and formatting changes at any time, acting as a **Braille Word processor**.



**Languages:** this feature enables the user to produce documents in commonly used European languages. This module includes Welsh and allows languages to be easily mixed within the same document.

# Braille Maker Professional

**Learner Braille:** allows the Braille rules to be introduced over a period of time. This is ideal for the preparation of learning materials where individual students are at different stages of the learning process. Supports any syllabus.



**Moon:** the software makes it possible to translate your document into the alternate tactile language. Ideal for those people preparing material for both Braille and moon readers, as the same file can be translated into both formats. The moon can then be either printed on swell paper or sent to an Index Basic and Everest embosser and produced as "dotty moon".

**Icons:** additional icons for Braille and Moon are automatically installed on the file drop down menu in MS Word, allowing direct access to Braille Maker from your Word processor.

**6 Key entry:** allows you to use the keyboard as a Perkins brailier.

# Braille Maker Professional

**Tables:** automatically translates tabulated information into a choice of four Braille formats; **stairstep, semi-colon, tab or paragraph.**

**Supports Word styles:** Documents formatted using styles are automatically imported and translated into your chosen Braille format.

**Live table of contents:** Using heading styles you can automatically create a Braille table of contents that will monitor and update the page numbers whilst you modify the document.

## DotLine

**On-going technical support for Braille Maker is available via a dedicated support line—DotLine. This facility is available to all Braille Maker customers during the hours of: -  
09:30 to 17:00 Monday to Friday**

# Which product do you need?

<b>Feature</b>	<b>Braille Maker Standard</b>	<b>Braille Maker Professional</b>
<b>Grade 1</b>	Y	Y
<b>Grade 2</b>	Y	Y
<b>Braille icon</b>	Y	Y
<b>Braille page preview</b>	Y	Y
<b>Print page numbering</b>	Y	Y
<b>Tables:</b>		
<b>Paragraph</b>	Y	Y
<b>Semi colon</b>		Y
<b>Tab</b>		Y
<b>Stair step</b>		Y
<b>Braille Editor</b>	x	Y
<b>6 Key entry</b>	x	Y
<b>Languages</b>	x	Y
<b>Moon</b>	x	Y
<b>Moon icon</b>	x	Y
<b>Learner Braille</b>	x	Y
<b>Supports styles</b>	x	Y
<b>Live table of contents</b>	x	Y
<b>Bookmarks</b>	x	Y

# Contacting Us

**Post**                    **Cragside AccessABILITY Limited**  
**The Cragside Suite**  
**International House**  
**Cray Avenue, Orpington**  
**Kent, BR5 3RY**

**Telephone**        **0870 321 7091**

**Fax**                    **0870 321 7098**

**Minicom**            **0870 321 7097**

**Dotline**             **0870 321 7099**

**Email**                **[dotline@braillemaker.com](mailto:dotline@braillemaker.com)**

**Web**                  **[www.braillemaker.com](http://www.braillemaker.com)**

**Online Shop** **[www.accessableworld.com](http://www.accessableworld.com)**